

Getting the Measure of Analytics: Using bibliometrics and usage statistics to evaluate e-journals

Dr. Fintan Bracken

University of Limerick

&

Arlene Healy

Trinity College Dublin

On behalf of the IReL Monitoring Group



Presentation Outline

- How to assess the value of e-journals
- Study methodology
- Results – Analyses of research
- Conclusions
- Possible applications

Assessing the Value of E-Journals

- Usage statistics → Number of downloads
- Cost per use (CPU) = $\frac{\text{Full costs for year}}{\text{Total no. downloads in year}}$

The screenshot shows the ScienceDirect website interface for The Lancet journal. At the top, there is a navigation bar with 'Journals', 'Books', 'Shopping cart', 'Sign in', and 'Help'. Below this is a search bar with 'Search all fields' and 'Advanced search' options. The main content area features the 'THE LANCET' logo and title, along with navigation links like 'About this Journal', 'Sample Issue Online', 'Submit your Article', and 'The Lancet Interactive'. There are also options to 'Get new article feed', 'Subscribe to new article alerts', and 'Add to Favorites'. The page footer indicates 'Copyright © 2015 Elsevier Ltd. All rights reserved'.

The screenshot shows the Wiley Online Library website interface for Open Anthropology. At the top, there is a navigation bar with 'Library, University of Limerick', 'Log in / Register', and a search icon. Below this is the 'Open Anthropology' logo and title, along with the subtitle 'A PUBLIC JOURNAL OF THE AMERICAN ANTHROPOLOGICAL ASSOCIATION'. The main content area features the 'AMERICAN ANTHROPOLOGIST' logo and title, along with navigation links like 'Home > Anthropology > General & Introductory Anthropology > American Anthropologist > Vol 116 Issue 4'. There are also options to 'Get New Content Alerts', 'Get RSS feed', 'Save to My Profile', 'Get Sample Copy', and 'Recommend to Your Librarian'. The page footer indicates '© American Anthropological Association'.

Novel Approach

Bibliometrics

+

Usage Statistics

- To evaluate both the **value & impact** of e-journals on research
- Developed by the IReL consortium

IReL - Irish Research eLibrary

- IReL is a consortium of the 7 Irish universities
- For selected e-resources, Royal College of Surgeons in Ireland (RCSI) also subscribe via IReL
- IReL includes Science, Technology & Medicine (STM) and Humanities & Social Sciences (HSS) e-resources
- IReL was established initially in 2004 and has received funding from SFI, HEA, DJEI and IUA
- The IReL Monitoring Group gather usage statistics on all of the IReL resources & produce reports

Bibliometrics

- Bibliometrics refers to the quantitative measures used to assess research output *i.e.* publication & citation data analysis
- Measures include:
 - Number of citations
 - Average citations per article
 - Journal Normalised Citation Impact (also called Journal Actual/Expected Citations Ratio)

Journal Normalised Citation Impact

Web of Science™ InCites™ Journal Citation Reports® Essential Science Indicators™ EndNote® Sign In Help English

WEB OF SCIENCE™ THOMSON REUTERS™

Search My Tools Search History Marked List

Full Text Options Look Up Full Text Save to EndNote online Add to Marked List 1 of 1

Abdominal field block: a new approach via the lumbar triangle

By: Rafi, AN (Rafi, AN)

ANAESTHESIA
Volume: 56 Issue: 10 Pages: 1024-1026
DOI: 10.1046/j.1365-2044.2001.02279-40.x
Published: OCT 2001
[View Journal Information](#)

Author Information
Reprint Address: Rafi, AN (reprint author)
+ Mid Western Reg Hosp, Limerick, Ireland.
Addresses:
+ [1] Mid Western Reg Hosp, Limerick, Ireland

Publisher
BLACKWELL SCIENCE LTD, P O BOX 88, OSNEY MEAD, OXFORD OX2 0EL, ENGLAND

Categories / Classification
Research Areas: Anesthesiology
Web of Science Categories: Anesthesiology

Document Information
Document Type: Letter
Language: English
Accession Number: **WOS:000171690000053**
PubMed ID: 11576144
ISSN: 0003-2409

This paper has been cited **96** times.
How does this citation count compare to the expected citation count of other articles published in the same journal, in the same year?
It is necessary to normalise for:

- Journal = Anaesthesia
- Year = 2001
- Document type = Letter

Citation Network

96 Times Cited
[Cited References](#)
[View Related Records](#)
[View Citation Map](#)
[Create Citation Alert](#)
(data from Web of Science™ Core Collection)

All Times Cited Counts

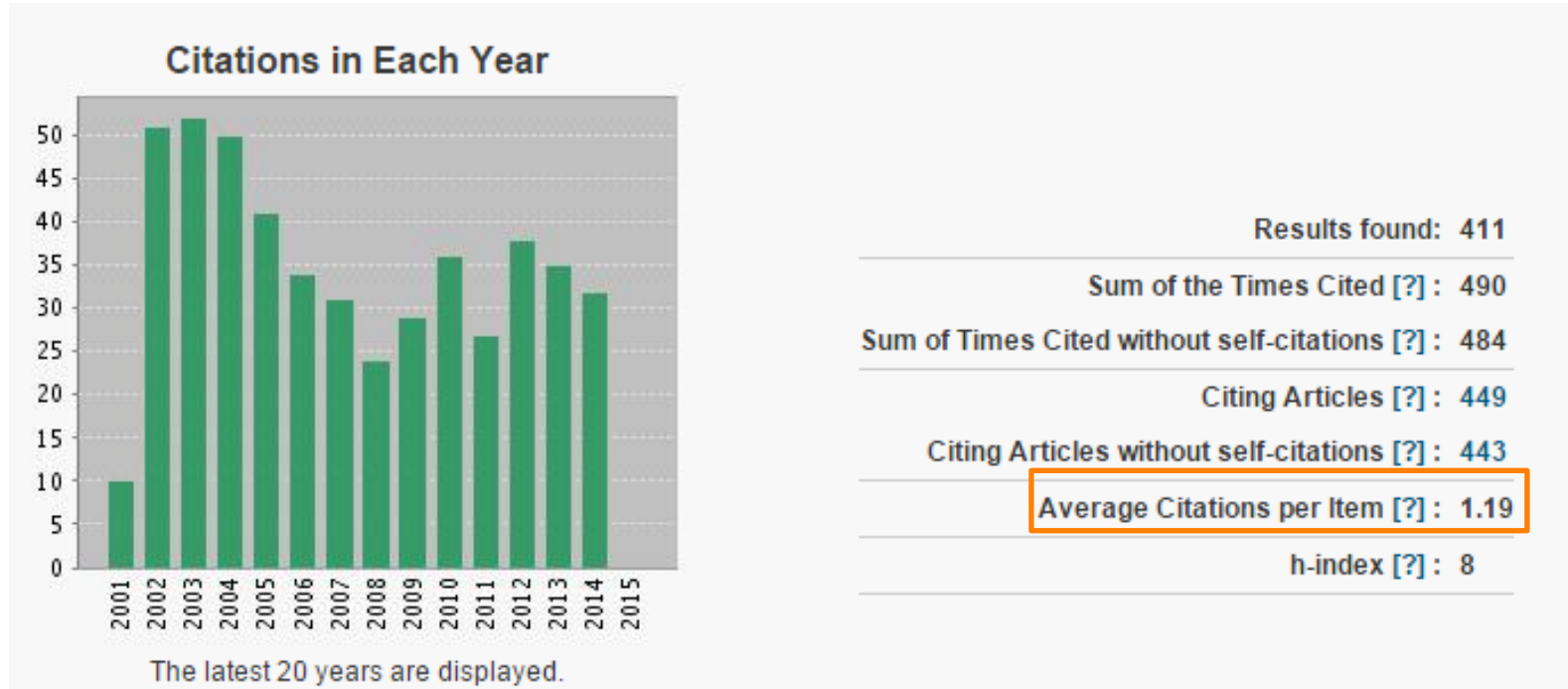
100 in All Databases
96 in Web of Science Core Collection
27 in BIOSIS Citation Index
4 in Chinese Science Citation Database
0 in Data Citation Index
0 in SciELO Citation Index

Most Recent Citation

Rebibo, Lionel. What to Do When It Is Technically Impossible to Perform Laparoscopic Sleeve Gastrectomy. OBESITY SURGERY, DEC 2014.
[View All](#)

This record is from:
Web of Science™ Core Collection

Run a Web of Science search for all documents in Anaesthesia in 2001 that are categorised as the document type 'letter'. Then create a citation report.



Letters published in 'Anaesthesia' in 2001 have been cited on average **1.19** times. This is the **Expected Count**.

Compare the total citations received to a paper to what is expected.

$$96 \text{ (Journal Actual)} / 1.19 \text{ (Journal Expected)} = \mathbf{80.67}$$

The paper has been cited 80.67 times more than expected.

This is called **Journal Normalised Citation Impact** or **Journal Actual/Expected Citations ratio**.

Methodology

- In depth analysis of the research output of researchers from 7 Irish universities (IUA) & RCSI
- What tools and datasets were used?
 1. InCites
 2. National Research Prioritisation Exercise (NRPE) classification scheme
 3. Single year usage data by journal

InCites Used to Identify:

1. Journals IUA and RCSI researchers most frequently publish in
 - Source Articles Listing: data for articles written by IUA and RCSI researchers

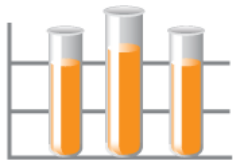
InCites (old version)

<http://incites.isiknowledge.com/Home.action>

CALIBRATE YOUR STRATEGIC RESEARCH VISION

InCites is a customized, citation-based research evaluation tool on the Web that enables you to analyze institutional productivity and benchmark your output against peers worldwide.

Follow the links below to view and create reports.



RESEARCH PERFORMANCE PROFILES

Comprehensive Publication & Citation Reports

- Pinpoint influential and emerging researchers
- Monitor collaboration activity

Dataset: Royal College of Surgeons Ireland: Address Search Dataset

[Get Started](#) >



GLOBAL COMPARISONS

Output & Impact Statistics for Benchmarking

- Compare your institution to others worldwide
- Identify field strengths within countries/territories

[Get Started](#) >



INSTITUTIONAL PROFILES

Key indicators of research excellence for leading institutions worldwide

- Examine measures on reputation, funding, publications, staff and students
- Use indicator groups to discover the strengths of comparable institutions

[Get Started](#) >

Discover InCites™

Learn more about the methodology behind InCites and how it can help elevate research excellence.

[Visit the website](#)

Training and Education Resources

View recorded presentations, register for online classes and more.

[Find out More](#)

InCites Customer Forum

[Join in or start](#) a user discussion

MY RESEARCH PERFORMANCE PROFILES DATASETS

Dataset: **Royal College of Surgeons Ireland: Address Search Dataset**

Select a dataset and click continue to view the selected dataset.

Irish Universities Association: Dublin City University: Address Search Dataset

This dataset contains 7,536 source articles from 12,072 authors published between 1981 and 2013. This dataset also contains 58,032 articles that have cited the 7,536 source articles in this dataset. Data updated from the Web of Science on Jan 19, 2013.

Irish Universities Association: Dublin Institute of Technology: Address Search Dataset

This dataset contains 2,765 source articles from 3,911 authors published between 1980 and 2013. This dataset also contains 20,452 articles that have cited the 2,765 source articles in this dataset. Data updated from the Web of Science on Aug 21, 2013.

Irish Universities Association: NUI Galway: Address Search Dataset

This dataset contains 13,638 source articles from 22,197 authors published between 1980 and 2013. This dataset also contains 97,735 articles that have cited the 13,638 source articles in this dataset. Data updated from the Web of Science on Aug 21, 2013.

Irish Universities Association: NUI Galway: Author Profile Dataset

This dataset contains 12,892 source articles from 20,563 authors published between 1980 and 2013. This dataset also contains 96,527 articles that have cited the 12,892 source articles in this dataset. Data updated from the Web of Science on Aug 07, 2013.

Irish Universities Association: NUI Maynooth: Address Search Dataset

This dataset contains 4,698 source articles from 6,613 authors published between 1980 and 2013. This dataset also contains 35,510 articles that have cited the 4,698 source articles in this dataset. Data updated from the Web of Science on Aug 16, 2013.

Irish Universities Association: NUI Maynooth: Author Profile Dataset

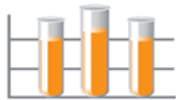
This dataset contains 2,046 source articles from 3,015 authors published between 1981 and 2011. This dataset also contains 19,052 articles that have cited the 2,046 source articles in this dataset. Data updated from the Web of Science on Mar 25, 2011.

Irish Universities Association: Trinity College Dublin: Address Search Dataset

This dataset contains 33,710 source articles from 48,886 authors published between 1980 and 2013. This dataset also contains 363,349 articles that have cited the 33,710 source articles in this dataset. Data updated from the Web of Science on Aug 19, 2013.

Irish Universities Association: Trinity College Dublin: Author Profile Dataset

This dataset contains 13,893 source articles from 26,377 authors published between 1980 and 2011. This dataset also contains 256,749 articles that have cited the 13,893 source articles in this dataset. Data updated from the Web of Science on Mar 18, 2012.



Getting Started with RESEARCH PERFORMANCE PROFILES

CREATE CUSTOM REPORTS

Custom reports allow you to focus in on particular items or groups of items within a dataset. Create reports for individual authors, groups of authors, specific time periods and more.

[Create a Report >](#)

How it Works:



Step 1: Choose a Report



Step 2: Select Authors, Institutions, etc



Step 3: Create and View Report

VIEW OVERALL DATASET REPORTS

Overall Dataset Reports provide bibliographic information and metrics for an entire dataset, including source and citing article sets. The reports are grouped into six categories.



Summary Reports



Productivity and Researcher Output



Collaboration and Research Networks



Specialization and Subject Area Strengths



Trends and Time Series Analysis



Impact and Citation Reports

RESEARCH PERFORMANCE PROFILES

Viewing Dataset: Irish Universities Association: Dublin City University: Address Search Dataset

CREATE A CUSTOM REPORT

Select a:

Report Type Source Articles Listing (which report to choose?)

Select fields to be included in report:

- | | | | |
|--|--|--|---|
| <input checked="" type="checkbox"/> Times Cited | <input checked="" type="checkbox"/> Publication Year | <input checked="" type="checkbox"/> First Author | <input type="checkbox"/> All Authors |
| <input checked="" type="checkbox"/> Subject Area | <input checked="" type="checkbox"/> Percentile in Subject Area | <input checked="" type="checkbox"/> Journal Expected Citations | <input type="checkbox"/> 2nd Generation Citations |
| <input checked="" type="checkbox"/> Journal | <input checked="" type="checkbox"/> Document Type | <input checked="" type="checkbox"/> Journal Actual/Expected Citations | <input type="checkbox"/> 2nd Generation Citations per Citing Document |
| <input checked="" type="checkbox"/> Volume | <input checked="" type="checkbox"/> Document Title | <input checked="" type="checkbox"/> Category Expected Citations | <input type="checkbox"/> Unique Identifier |
| <input checked="" type="checkbox"/> Page | <input checked="" type="checkbox"/> Journal Impact Factor | <input checked="" type="checkbox"/> Category Actual/Expected Citations | |

* Selecting these items will increase the processing time

Time Period 1997 to 2012

[Create Report](#) [Preview Documents](#) [Save Selections](#) [Clear Selections](#)

You can limit the data to be included in your report to specific items, or use a saved set from [My Saved Selections](#).
Your selections will appear in the box on the right.

[Authors](#) | [Subject Areas](#) | [Institutions](#) | [Countries / Territories](#) | [Journals](#) | [Titles](#) | [Keywords](#) | [Document Types](#) | [Document Numbers](#) | [Thresholds](#) | [Funding Agencies](#) | [Grant Numbers](#)

[Browse List](#) [Search](#)

Browse **AUTHORS** beginning with:

Selected items: [[hide all selections](#)]

Repeated for all 8 institutions & combined into one Excel file & then duplicate rows were removed – these are the articles that have authors from more than one IReL member

ALL Source Articles Listing 1994-2013 - Microsoft Excel

File Home Insert Page Layout Formulas Data Review View Developer Add-Ins

From Access From Web From Text From Other Sources Existing Connections Refresh All Connections Sort Filter Reapply Text to Columns Remove Duplicates Data Validation Consolidate What-If Analysis Group Ungroup Subtotal Show Detail Hide Detail

A1 Times Cited

Remove Duplicates

Delete duplicate rows from a sheet.

You can specify which columns should be checked for duplicate information.

| | A | B | C | D | E | F | G | H | I | J | K | L | M | N | O | P | Q | R | S | T | U |
|----|------------|----------|----------|------------|------------|----------------------------|------------|------------|------------|---------|------|---------------------|-------------|-------------|-------------|---------------------------------|-------------|---------|------|-----------|---|
| | Times Cite | 2nd Gene | 2nd Gene | Journal Ex | Category I | Journal Actual/Expected Ci | Category I | Percentile | Journal Im | Publica | Year | Journal | Author | Journal | Document | Unique Id | Volume | Page | No. | | |
| 1 | 3 | 0 | 0 | 1.72 | 0.44 | 1.74418605 | 6.81818 | 100 | 20 | 20 | 2012 | MULTIDIS(ARTICLE | COLE, SW | Cole, Steve | Cole, Steve | PROCEEDINGS OF THE NATIONAL | Transcript | 3.1E+11 | 1253 | 122-132 | |
| 2 | 5 | 4 | 0.8 | 9.03 | 8.61 | 0.55370986 | 0.58072 | 28.76 | 2.773 | 20 | 2012 | MULTIDIS(ARTICLE | GHOSH, C | Ghosh, Ch | Ghosh, Ch | PROCEEDINGS OF THE NATIONAL | Impaired I | 3.1E+11 | 367 | 369-389 | |
| 3 | 1 | 0 | 0 | 0 | | | | | 9.681 | 20 | 2012 | MULTIDIS(ARTICLE | WUEST, SE | Wuest, Sa | Wuest, Sa | PROCEEDINGS OF THE NATIONAL | Molecular | 3.1E+11 | 109 | 13452-13 | |
| 4 | 4 | 0 | 0 | 1.63 | 0.44 | 2.45398773 | 9.09091 | 9.13 | 9.681 | 20 | 2012 | MULTIDIS(ARTICLE | DYKE, GJ | Dyke, Gare | Dyke, Gare | PROCEEDINGS OF THE NATIONAL | What abo | 2.9E+11 | 108 | E147-E147 | |
| 5 | 1 | 0 | 0 | 1.32 | 0.2 | 0.75757576 | 5 | | 9.681 | 20 | 2011 | MULTIDIS(LETTER | ZHAO, HB | Zhao, Hua | Zhao, Hua | PROCEEDINGS OF THE NATIONAL | The evol | 2.7E+11 | 106 | 8980-8981 | |
| 6 | 30 | 95 | 3.16667 | 31.25 | 6.54 | | 0.96 | 4.58716 | 7.5 | 9.681 | 2009 | MULTIDIS(ARTICLE | KANOGLU, K | Kanoglu, U | Kanoglu, U | PROCEEDINGS OF THE ROYAL SOC | Focusing | 3.2E+11 | | 469 | |
| 7 | 0 | 0 | 0 | 0 | | | | | 1.971 | 20 | 2013 | MULTIDIS(ARTICLE | NICHOLLS, N | Nicholls, F | Nicholls, F | PHILOSOPHICAL TRANSACTIONS C | Sea-level r | 2.8E+11 | 369 | 161-181 | |
| 8 | 40 | 90 | 2.25 | 5.15 | 5.85 | 7.76699029 | 6.83761 | 2.96 | 2.773 | 20 | 2011 | MULTIDIS(ARTICLE | CONSTANT | Constanti | Constanti | PHILOSOPHICAL TRANSACTIONS C | Rotation | 2.5E+11 | 365 | 2227-2231 | |
| 9 | 29 | 264 | 9.10345 | 14.62 | 12.39 | 1.98358413 | 2.3406 | 11.28 | 2.773 | 20 | 2007 | MULTIDIS(ARTICLE | CAMPBELL | Campbell, I | Campbell, I | PROCEEDINGS OF THE NATIONAL | An experir | 2.7E+11 | 106 | 17817-17 | |
| 10 | 17 | 104 | 6.11765 | 31.25 | 6.54 | | 0.544 | 2.59939 | 10.72 | 9.681 | 2009 | MULTIDIS(ARTICLE | PESSIA, E | Pessia, Eu | Pessia, Eu | PROCEEDINGS OF THE NATIONAL | Mammali | 3E+11 | 109 | 5346-535 | |
| 11 | 14 | 6 | 0.42857 | 1.63 | 0.44 | 8.58895706 | 31.8182 | 0.85 | 9.681 | 20 | 2012 | MULTIDIS(ARTICLE | COEN, RF | Coen, Rob | Coen, Rob | PROCEEDINGS OF THE NATIONAL | Failure to | 2.9E+11 | 108 | E89-E89 | |
| 12 | 4 | 0 | 0 | 1.32 | 0.2 | 3.03030303 | 20 | | 9.681 | 20 | 2011 | MULTIDIS(LETTER | MUGHAL, M | Mughal, A | Mughal, A | PROCEEDINGS OF THE ROYAL SOC | Curvatur | 2.6E+11 | 465 | 219-238 | |
| 13 | 1 | 9 | 9 | 6.86 | 8.61 | 0.14577259 | 0.11614 | 49.95 | 1.971 | 20 | 2009 | MULTIDIS(ARTICLE | MCNALLY, M | McNally, I | McNally, I | PROCEEDINGS OF THE NATIONAL | Flexible st | 3E+11 | 108 | E971-E971 | |
| 14 | 1 | 0 | 0 | 1.32 | 0.2 | 0.75757576 | 5 | | 9.681 | 20 | 2011 | MULTIDIS(LETTER | KANE, A | Kane, Ada | Kane, Ada | PROCEEDINGS OF THE NATIONAL | A suggesti | 3.1E+11 | 109 | E3056-E30 | |
| 15 | 1 | 0 | 0 | 0.68 | 0.08 | 1.47058824 | 12.5 | | 9.681 | 20 | 2012 | MULTIDIS(LETTER | CHRISTIN, C | Christin, F | Christin, F | PROCEEDINGS OF THE NATIONAL | Anatomic | 3.1E+11 | 110 | 1381-1381 | |
| 16 | 0 | 0 | 0 | 0 | | | 0 | 0 | 9.681 | 20 | 2013 | MULTIDIS(ARTICLE | GARDINER | Gardiner, G | Gardiner, G | PROCEEDINGS OF THE NATIONAL | Reply to K | 2.9E+11 | 108 | E521-E521 | |
| 17 | 0 | 0 | 0 | 0 | | | | | 9.681 | 20 | 2011 | MULTIDIS(ARTICLE | STACEY, D | Stacey, Da | Stacey, Da | PROCEEDINGS OF THE NATIONAL | RASGRF2 r | 3.1E+11 | 109 | 21128-21 | |
| 18 | 0 | 0 | 0 | 0 | | | | | 9.681 | 20 | 2013 | MULTIDIS(ARTICLE | DESCH, KC | Desch, Kai | Desch, Kai | PROCEEDINGS OF THE NATIONAL | Linkage ar | 3.1E+11 | 110 | 588-593 | |
| 19 | 0 | 0 | 0 | 0 | | | | | 9.681 | 20 | 2008 | MULTIDIS(PROCEEDI | TIMMINS, T | Timmins, I | Timmins, I | WMSCI 2008: 12TH WORLD MULI | Critical Re | 2.6E+11 | | 39-40 | |
| 20 | 8 | 2 | 0.25 | 9.47 | 2.07 | 0.84477297 | 3.86473 | 9.49 | 9.681 | 20 | 2011 | MULTIDIS(ARTICLE | HAMIDIAN | Hamidian, H | Hamidian, H | PROCEEDINGS OF THE NATIONAL | How Kond | 3E+11 | 108 | 18233-18 | |
| 21 | 2 | 0 | 0 | 0 | | | | | 9.681 | 20 | 2013 | MULTIDIS(ARTICLE | CUJ, YJ | Cui, Yujun | Cui, Yujun | PROCEEDINGS OF THE NATIONAL | Historical | 3.1E+11 | 110 | 577-582 | |
| 22 | 0 | 0 | 0 | 0 | | | | | 2.773 | 20 | 2013 | MULTIDIS(ARTICLE | DRAPER, S | Draper, S. | Draper, S. | PHILOSOPHICAL TRANSACTIONS C | Energy pol | 3.1E+11 | | 371 | |
| 23 | 0 | 0 | 0 | 0 | | | | | 9.681 | 20 | 2013 | MULTIDIS(ARTICLE | COLLERAN | Colleran, J | Colleran, J | PROCEEDINGS OF THE NATIONAL | Deubiquit | 3.1E+11 | 110 | 618-623 | |
| 24 | 0 | 0 | 0 | 0 | | | | | 9.681 | 20 | 2005 | MULTIDIS(PROCEEDI | HOFFMAN | Hoffman, M | Hoffman, M | Micro Total Analysis Systems 2C | Developm | 2.3E+11 | | 390-392 | |
| 25 | 0 | 0 | 0 | 0.11 | 1.49 | | 0 | 0 | 0.51 | 20 | 2008 | MULTIDIS(EDITORIAL | TRENCH, B | Trench, Br | Trench, Br | SCIENTIST | An under | 2.6E+11 | | 27-27 | |
| 26 | 3 | 0 | 0 | 1.63 | 0.44 | 1.8404908 | 6.81818 | 100 | 9.681 | 20 | 2012 | MULTIDIS(ARTICLE | BAPTESTE, B | Bapteste, I | Bapteste, I | PROCEEDINGS OF THE NATIONAL | Evolution | 3.1E+11 | 109 | 18266-18 | |
| 27 | 0 | 0 | 0 | 0 | | | | | 9.681 | 20 | 2012 | MULTIDIS(ARTICLE | NELSON-S | Nelson-Sa | Nelson-Sa | PROCEEDINGS OF THE NATIONAL | Acquisitio | 3.1E+11 | 109 | 20537-20 | |
| 28 | 0 | 0 | 0 | 0 | | | | | 9.681 | 20 | 2012 | MULTIDIS(ARTICLE | RADU, E | Radu, Eugi | Radu, Eugi | PROCEEDINGS OF THE ROMANIAN | ON ABELIA | 3.1E+11 | 13 | 322-328 | |
| 29 | 5 | 6 | 1.2 | 4 | 5.85 | | 1.25 | 0.8547 | 36.6 | 1.971 | 2010 | MULTIDIS(ARTICLE | FWOWLER, F | Fowler, A. | Fowler, A. | PROCEEDINGS OF THE ROYAL SOC | The instab | 2.8E+11 | 466 | 2673-269 | |
| 30 | 3 | 0 | 0 | 1.63 | 0.44 | 1.8404908 | 6.81818 | 100 | 9.681 | 20 | 2012 | MULTIDIS(ARTICLE | DURRETT, D | Durrett, Ri | Durrett, Ri | PROCEEDINGS OF THE NATIONAL | Graph fiss | 3E+11 | 109 | 3682-368 | |
| 31 | 1 | 0 | 0 | 2.06 | 2.07 | 0.48543689 | 0.48309 | 100 | 1.971 | 20 | 2011 | MULTIDIS(ARTICLE | WARD, JA | Ward, Jon | Ward, Jon | PROCEEDINGS OF THE ROYAL SOC | Criteria fo | 2.9E+11 | 467 | 2185-220 | |
| 32 | 1 | 0 | 0 | 2.06 | 2.07 | 0.48543689 | 0.48309 | 100 | 1.971 | 20 | 2011 | MULTIDIS(ARTICLE | VYNNYCKY, V | Vynnycky, V | Vynnycky, V | PROCEEDINGS OF THE ROYAL SOC | Reaction-l | 2.9E+11 | 467 | 2534-256 | |
| 33 | 0 | 0 | 0 | 0 | | | | | 9.681 | 20 | 2005 | MULTIDIS(PROCEEDI | DAVIES, M | Davies, M | Davies, M | Micro Total Analysis Systems 2C | A new des | 2.3E+11 | | 285-287 | |

Excel Pivot Table

| Row Labels | Actual/Expected Citations | Sum of No. of Articles | Sum of Times Cited | Sum of Average Cites per Article |
|--|---------------------------|------------------------|--------------------|----------------------------------|
| JOURNAL OF PHYSICS G-NUCLEAR AND PARTICLE PHYSICS | 84.15739596 | 2 | 4085 | 2042.5 |
| ADVANCES IN CRYPTOLOGY ASIACRYPT 2005 | 50.56818182 | 1 | 89 | 89 |
| AUSTRALASIAN JOURNAL OF PHILOSOPHY | 50 | 2 | 1 | 0.5 |
| JOURNAL OF CHEMINFORMATICS | 49.36170213 | 5 | 116 | 23.2 |
| INVENTIONES MATHEMATICAE | 49.32735426 | 1 | 220 | 220 |
| ACADEMY OF MANAGEMENT LEARNING & EDUCATION | 33.33333333 | 1 | 1 | 1 |
| ASIA PACIFIC JOURNAL OF HUMAN RESOURCES | 33.33333333 | 1 | 2 | 2 |
| ARCHIVE FOR RATIONAL MECHANICS AND ANALYSIS | 32.59385666 | 2 | 382 | 191 |
| ANALYSIS AND APPLICATIONS | 29.91689751 | 1 | 108 | 108 |
| NATURE PHOTONICS | 29.18088737 | 7 | 513 | 73.28571429 |
| JOURNAL OF LABOR ECONOMICS | 25.72463768 | 2 | 213 | 106.5 |
| INTERNATIONAL JOURNAL OF APPLIED GLASS SCIENCE | 25 | 1 | 6 | 6 |
| TOPICS IN CRYPTOLOGY - CT-RSA 2005, PROCEEDINGS | 24.88986784 | 2 | 113 | 56.5 |
| JOURNAL OF APICULTURAL RESEARCH | 23.33333333 | 2 | 7 | 3.5 |
| BULLETIN OF THE AMERICAN MATHEMATICAL SOCIETY | 23.25925926 | 2 | 157 | 78.5 |
| NEW ENGLAND JOURNAL OF MEDICINE | 22.61832608 | 46 | 4105 | 89.23913043 |
| NATURE NANOTECHNOLOGY | 20.36144578 | 18 | 1690 | 93.88888889 |
| MECHANICAL SYSTEMS AND SIGNAL PROCESSING | 20 | 1 | 4 | 4 |
| CELL METABOLISM | 20 | 1 | 16 | 16 |
| NATURE MATERIALS | 19.86491855 | 16 | 2500 | 156.25 |
| SEMANTIC WEB-ISWC 2010, PT I | 19.44444444 | 2 | 7 | 3.5 |
| CRYPTOGRAPHIC HARDWARE AND EMBEDDED SYSTEMS - CHES 2005, PRO | 19.38325991 | 1 | 44 | 44 |
| JOURNAL OF GLOBAL HISTORY | 18.60465116 | 2 | 16 | 8 |
| NATURE | 17.91708851 | 63 | 6725 | 106.7460317 |
| ANNALS OF INTERNAL MEDICINE | 17.51412429 | 8 | 310 | 38.75 |
| IEEE INDUSTRIAL ELECTRONICS MAGAZINE | 17.3553719 | 1 | 42 | 42 |

PivotTable Field List

Choose fields to add to report:

- Times Cited
 - 2nd Generation Citations
 - 2nd Generation Citations per Citing Docu...
 - Journal Expected Citations
 - Category Expected Citations
 - Journal Actual/Expected Citations
 - Category Actual/Expected Citations
 - Percentile in Subject Area
 - Journal Impact Factor
- Publication Year
 - Subject Area
 - Document Type
 - First Author
 - First Author2
 - All Authors

Drag fields between areas below:

Report Filter: Publication Year, Ireland Prioritis...

Column Labels: Σ Values

Row Labels: Journal

Σ Values: Sum of Calculat..., Sum of No. of A..., Sum of Times Ci..., Sum of Averag...

Defer Layout Update Update

InCites Used to Identify:

1. Journals IUA and RCSI researchers most frequently publish in
 - Source Articles Listing: data for articles written by IUA and RCSI researchers
2. Journals most frequently citing articles authored by IUA and RCSI researchers
 - Journal Ranking (citing article set): data for articles citing articles produced by IUA and RCSI researchers



CREATE A CUSTOM REPORT

Select a:

Report Type

Journal Ranking (citing article set) ▼

[which report to choose?](#)

Time Period

1997 ▼

to

2012 ▼

Create Report

Preview Documents

Save Selections

Clear Selections

You can limit the data to be included in your report to specific items, or use a saved set from [My Saved Selections](#).

Your selections will appear in the box on the right.

Authors

Subject Areas

Institutions

Countries / Territories

Journals

Titles

Keywords

Document Types

Document Numbers

Thresholds

Funding Agencies

Grant Numbers

Browse List

Search

Browse **AUTHORS** beginning with:

0-9 | **A** | B | C | D | E | F | G | H | I | J | K | L | M | N | O | P | Q | R | S | T | U | V | W | X | Y | Z

A Items 1 to 500 of 5860 ◀◀ | Go to item: **Go** ▶▶

| Count | Add | Authors |
|-------|-----|---------|
| 1 | + | A |

Selected items: [\[hide all selections\]](#)

| | A | B | C | D | E | F |
|----|------|---|-------------|--------------------------|----------------------------|---|
| 1 | Rank | Journal | Times Cited | Web of Science Documents | Average Cites per Document | |
| 2 | 1 | CHEMICAL REVIEWS | 12166 | 71 | 171.3521127 | |
| 3 | 2 | ANALYTICAL CHEMISTRY | 7576 | 360 | 21.04444444 | |
| 4 | 3 | BIOSENSORS & BIOELECTRONICS | 6487 | 308 | 21.06168831 | |
| 5 | 4 | ANALYTICA CHIMICA ACTA | 5703 | 309 | 18.45631068 | |
| 6 | 5 | ASTROPHYSICAL JOURNAL | 5599 | 254 | 22.04330709 | |
| 7 | 6 | ASTROPHYSICAL JOURNAL SUPPLEMENT SERIES | 5522 | 17 | 324.8235294 | |
| 8 | 7 | JOURNAL OF THE AMERICAN CHEMICAL SOCIETY | 5343 | 200 | 26.715 | |
| 9 | 8 | ANGEWANDTE CHEMIE-INTERNATIONAL EDITION | 4969 | 114 | 43.5877193 | |
| 10 | 9 | INORGANIC CHEMISTRY | 4595 | 265 | 17.33962264 | |
| 11 | 10 | TALANTA | 4287 | 302 | 14.19536424 | |
| 12 | 11 | SENSORS AND ACTUATORS B-CHEMICAL | 4116 | 375 | 10.976 | |
| 13 | 12 | ELECTROANALYSIS | 4040 | 325 | 12.43076923 | |
| 14 | 13 | CHEMICAL SOCIETY REVIEWS | 3755 | 68 | 55.22058824 | |
| 15 | 14 | JOURNAL OF HAZARDOUS MATERIALS | 3528 | 166 | 21.25301205 | |
| 16 | 15 | JOURNAL OF CHROMATOGRAPHY A | 3470 | 222 | 15.63063063 | |
| 17 | 16 | MONTHLY NOTICES OF THE ROYAL ASTRONOMICAL SOCIETY | 3289 | 229 | 14.36244541 | |
| 18 | 17 | JOURNAL OF PHYSICAL CHEMISTRY C | 3152 | 292 | 10.79452055 | |
| 19 | 18 | ANALYTICAL AND BIOANALYTICAL CHEMISTRY | 3137 | 232 | 13.52155172 | |
| 20 | 19 | CHEMISTRY-A EUROPEAN JOURNAL | 3096 | 156 | 19.84615385 | |
| 21 | 20 | CHEMICAL COMMUNICATIONS | 3095 | 212 | 14.5990566 | |
| 22 | 21 | ELECTROCHIMICA ACTA | 2889 | 254 | 11.37401575 | |
| 23 | 22 | APPLIED PHYSICS LETTERS | 2865 | 287 | 9.9825784 | |
| 24 | 23 | LANGMUIR | 2756 | 212 | 13 | |
| 25 | 24 | JOURNAL OF PHYSICS G-NUCLEAR AND PARTICLE PHYSICS | 2618 | 3 | 872.6666667 | |
| 26 | 25 | NATURE REVIEWS CANCER | 2582 | 14 | 184.4285714 | |
| 27 | 26 | TETRAHEDRON | 2443 | 97 | 25.18556701 | |
| 28 | 27 | COORDINATION CHEMISTRY REVIEWS | 2392 | 78 | 30.66666667 | |
| 29 | 28 | PHYSICAL REVIEW D | 2390 | 225 | 10.62222222 | |
| 30 | 29 | DAIICHI TRANSACTIONS | 2333 | 231 | 10.0995671 | |

Usage Statistics: COUNTER JR1 Report

| JR1 Number of Successful Full-Text Article Requests by Month and Journal | | | | | | | | | | | | |
|--|-----------|----------|-------------|------------------------|------------|-------------|------------------------|-----------------------|----------------------|--------|--------|--------|
| Account: Institution A | | | | | | | | | | | | |
| Journal | Publisher | Platform | Journal DOI | Proprietary Identifier | Print ISSN | Online ISSN | Reporting Period Total | Reporting Period HTML | Reporting Period PDF | Jan-13 | Feb-13 | Mar-13 |
| Total | | | | | | | 137,648 | 72,840 | 64,808 | 46,353 | 44,104 | 47,191 |
| Academic Pediatrics | Pub A | Plat A | | ACAP | 1876-2859 | | 36 | 10 | 26 | 6 | 24 | 6 |
| Academic Radiology | Pub A | Plat A | | XACRA | 1076-6332 | | 46 | 28 | 18 | 12 | 21 | 13 |
| Accounting Forum | Pub A | Plat A | | ACCFOR | 0155-9982 | | 96 | 48 | 48 | 45 | 41 | 10 |
| Acta Agronomica Sinica | Pub A | Plat A | | AAGRO | 1875-2780 | | 1 | 0 | 1 | 0 | 1 | 0 |
| Acta Astronautica | Pub A | Plat A | | AA | 0094-5765 | | 15 | 6 | 9 | 1 | 2 | 12 |
| Acta Automatica Sinica | Pub A | Plat A | | AAS | 1874-1029 | | 0 | 0 | 0 | 0 | 0 | 0 |
| Acta Biomaterialia | Pub A | Plat A | | ACTBIO | 1742-7061 | | 318 | 200 | 118 | 78 | 104 | 136 |
| Acta Ecologica Sinica | Pub A | Plat A | | CHNAES | 1872-2032 | | 2 | 1 | 1 | 1 | 0 | 1 |
| Acta Genetica Sinica | Pub A | Plat A | | 0 | 0379-4172 | | 1 | 0 | 1 | 0 | 0 | 1 |
| Acta Histochemica | Pub A | Plat A | | ACTHIS | 0065-1281 | | 10 | 6 | 4 | 7 | 1 | 2 |

COUNTER (Counting Online Usage of Networked Electronic Resources): international initiative to improve the reliability of online usage statistics via agreed standards (<http://www.projectcounter.org/>)

Combined all duplicate instances for each journal to produce a report with the total usage for each journal. NRPE headings mapped to each journal.

2012 journals-Complete list-Duplicates combined-with WoS SA - Microsoft Excel

File Home Insert Page Layout Formulas Data Review View Developer Add-Ins AbleBits.com

Workbook Manager Find and Replace Merge Tables Wizard **Combine Rows Wizard** Merge Cells Wizard Advanced Wizard Quick Remover Fuzzy Duplicate Finder Random generator Random Sorter Cell Cleaner Split Names Units Converter Unit: Acceleration From: Metre per second squa To: Standard gravity Convert range Options Tools

Combine Rows Wizard for Microsoft Excel
AbleBits.com Add-ins Collection for Microsoft Excel
Press F1 for add-in help.

| | Journal title | Online ISSN | Combined YTD total | Combined YTD html | Combined YTD pdf | No. of Databases with Title | YTD total - Breakdown per DB | YTD html - Breakdown per DB | YTD pdf - Breakdown per DB | Database Name (order sa |
|----|---|---------------------|--------------------|-------------------|------------------|-----------------------------|------------------------------|-----------------------------|----------------------------|--|
| 2 | EURASIP Journal on Audio, Speech, and Music Processing | 1687-4714 1687-4722 | 11 | 0 | 11 | 1 | 11 | 0 | 11 | ACM Digital Library |
| 3 | The International Food and Agribusiness Management Review | 1096-7508 | 24 | 8 | 16 | 1 | 24 | 8 | 16 | Science Direct |
| 4 | CALIFORNIA AGRICULTURE | 0008-0845 | 8 | 0 | 8 | 1 | 8 | 0 | 8 | EBSCO - Academic Search C |
| 5 | American Antiquity | 0002-7316 | 879 | 545 | 334 | 1 | 879 | 545 | 334 | JSTOR - A&S I-VII, LS, Irelar |
| 6 | Antiquity | 0003-598X | 661 | 94 | 567 | 2 | 520; 141 | 0 | 520 | EBSCO - Academic Search C |
| 7 | International Journal of Osteoarchaeology | 1047-482X 1099-1212 | 721 | 71 | 650 | 1 | 721 | 71 | 650 | Wiley-Blackwell 2010 coml |
| 8 | JOURNAL OF ARCHAEOLOGICAL METHOD AND THEORY | 1072-5369 | 972 | 491 | 474 | 3 | 46; 83; 843 | 0 | 46 | EBSCO - Academic Search C A&S I-VII, LS, Ireland C. |
| 9 | New Hibernia Review | 1092-3977 | 12,968 | 7,700 | 5,268 | 3 | 1; 4,430; 8,537 | 0 | 1 | EBSCO - Academic Search C Collection; JSTOR - A&S I-V |
| 10 | AFRICAN ARCHAEOLOGICAL REVIEW | 0263-0338 | 181 | 83 | 98 | 4 | 21; 3; 15; 142 | 0 | 21 | EBSCO - Academic Search C SpringerLink; JSTOR - A&S |
| 11 | American Journal of Archaeology | 0002-9114 1939-828X | 3,417 | 2,084 | 1,333 | 1 | 3,417 | 2,084 | 1,333 | JSTOR - A&S I-VII, LS, Irelar |
| 12 | Anatolian Studies | 0066-1546 2048-0849 | 206 | 123 | 83 | 2 | 9; 197 | 0 | 9 | Cambridge Journals Online |
| 13 | Ancient Mesoamerica | 0956-5361 1469-1787 | 31 | 0 | 31 | 1 | 31 | 0 | 31 | Cambridge Journals Online |
| 14 | ARABIAN ARCHAEOLOGY AND EPIGRAPHY | 0905-7196 | 24 | 7 | 17 | 2 | 11; 13 | 0 | 11 | EBSCO - Academic Search C combined collection |
| 15 | Archaeological Dialogues | 1380-2038 1478-2294 | 82 | 1 | 81 | 1 | 82 | 1 | 81 | Cambridge Journals Online |
| 16 | Archaeologies | 1555-8622 1935-3987 | 48 | 2 | 35 | 1 | 48 | 2 | 35 | SpringerLink |
| 17 | ARCHAEOLOGY | 0003-8113 | 315 | 268 | 47 | 1 | 315 | 268 | 47 | EBSCO - Academic Search C |
| 18 | Archaeology Ireland | 0790-892X | 11,778 | 6,178 | 5,600 | 1 | 11,778 | 6,178 | 5,600 | JSTOR - A&S I-VII, LS, Irelar |
| 19 | Cambridge Archaeological Journal | 0959-7743 1474-0540 | 216 | 0 | 216 | 1 | 216 | 0 | 216 | Cambridge Journals Online |
| 20 | Estonian Journal of Archaeology | 1406-2933 | 4 | 1 | 3 | 1 | 4 | 1 | 3 | Wilson Omnifile Mega |
| 21 | Hesperia | 0018-098X 1553-5622 | 519 | 302 | 217 | 3 | 7; 26; 486 | 5 | 2 | Project Muse Premium Col A&S I-VII, LS, Ireland C. |
| 22 | Historical Archaeology | 0440-9213 | 1,153 | 667 | 486 | 1 | 1,153 | 667 | 486 | JSTOR - A&S I-VII, LS, Irelar |
| 23 | INDUSTRIAL ARCHAEOLOGY REVIEW | 0309-0728 | 36 | 0 | 36 | 1 | 36 | 0 | 36 | EBSCO - Academic Search C |
| 24 | International Journal of Historical Archaeology | 1092-7697 | 219 | 10 | 203 | 2 | 26; 193 | 2 | 24 | Wilson Omnifile Mega; Spi |
| 25 | International Journal of Nautical Archaeology | 1057-2414 1095-9270 | 273 | 74 | 199 | 2 | 246; 27 | 70 | 176 | Wiley-Blackwell 2010 coml |
| 26 | JOURNAL OF ARCHAEOLOGICAL RESEARCH | 1059-0161 | 87 | 8 | 76 | 2 | 34; 53 | 0 | 34 | EBSCO - Academic Search C |

Pivot 2012 journals WoS Usage NRPE Main Usage NRPE Sub Usage

Analysis of the InCites Research Data



Research Productivity

- Number of articles authored by IUA & RCSI researchers



Research Impact

- Number of citations per article
- Journal Normalised Citation Impact



Research Influence

- Number of articles citing IUA & RCSI researchers

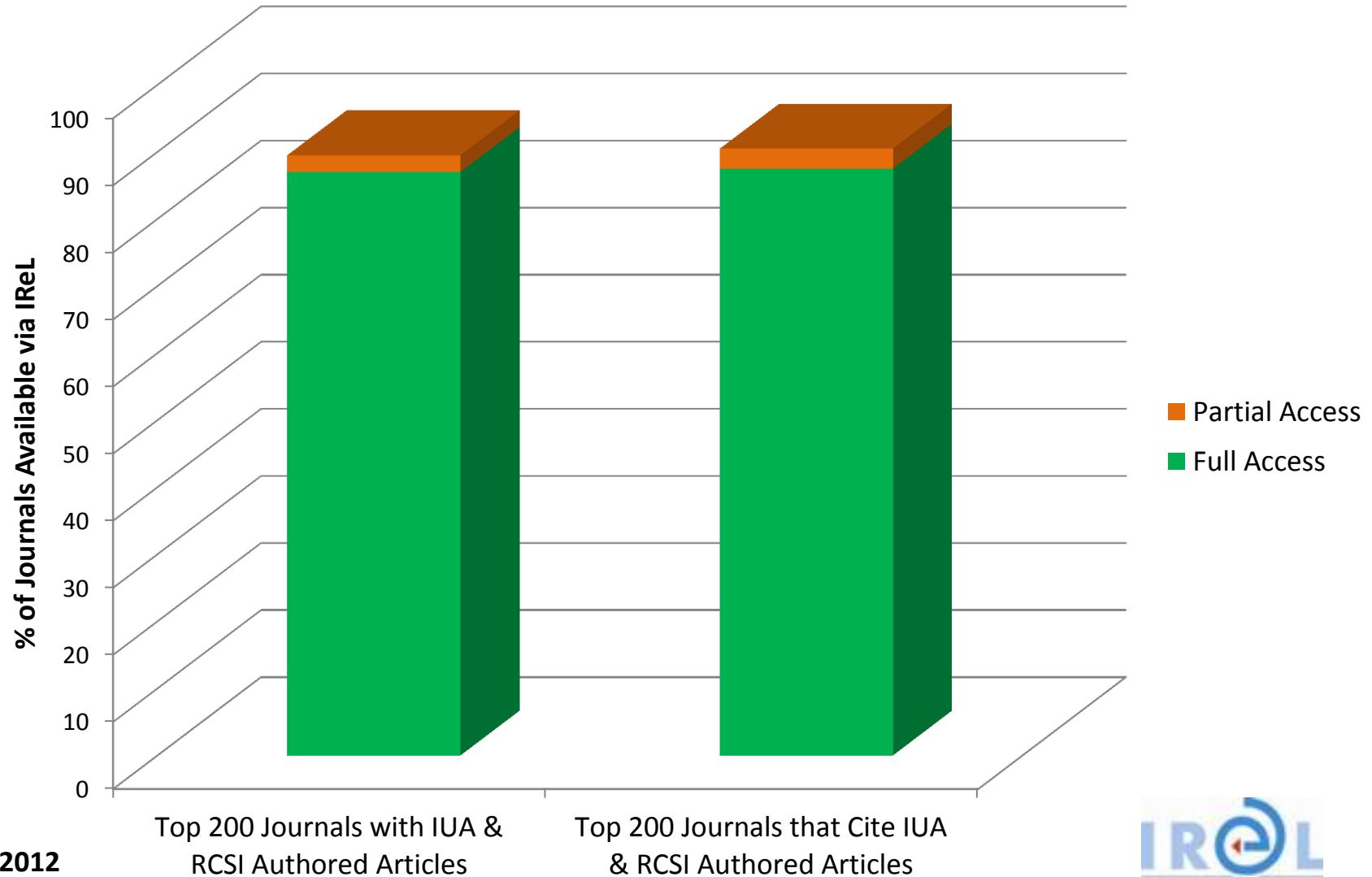
Post IReL *i.e.* post provision of e-journals to IUA & RCSI on a consortium basis

Analysis of IUA & RCSI Authored Research: 2005-2012

Summary Statistics

| | |
|------------------------------------|---------|
| Total Number of Articles | 59,218 |
| Total Number of Journals | 9,419 |
| Total Number of Citations | 493,137 |
| Average Cites per Article | 8.33 |
| Journal Normalised Citation Impact | 1.60 |

Meeting Researchers' Needs



2005-2012

Journals with the most IUA & RCSI authored articles 2005-2012

| Rank | Journal | No. of Articles | Times Cited | Publisher | Available via IReL |
|------|---|-----------------|-------------|--|--------------------|
| 1 | IRISH JOURNAL OF MEDICAL SCIENCE | 2,425 | 761 | SpringerLink | Yes |
| 2 | PHYSICAL REVIEW B | 310 | 4,302 | American Physical Society Journals (APS) | Yes |
| 3 | PLOS ONE | 286 | 1,850 | PLOS | Yes |
| 4 | APPLIED PHYSICS LETTERS | 264 | 2,693 | American Institute of Physics Journals | Yes |
| 5 | PHYSICAL REVIEW LETTERS | 253 | 5,170 | American Physical Society Journals (APS) | Yes |
| 6 | BRITISH JOURNAL OF SURGERY | 220 | 434 | Wiley Online Library | Yes |
| 7 | JOURNAL OF APPLIED PHYSICS | 203 | 1,461 | American Institute of Physics Journals | Yes |
| 8 | AMERICAN JOURNAL OF OBSTETRICS AND GYNECOLOGY | 201 | 224 | Science Direct | Yes |
| 9 | PHYSICAL REVIEW D | 187 | 2,977 | American Physical Society Journals (APS) | Yes |
| 10 | JOURNAL OF BIOLOGICAL CHEMISTRY | 169 | 3,251 | ASBMB | Yes |

Journals with the most articles from 2005 to 2012 that cited IUA & RCSI research from 1980-2012

| Rank | Journal | No. of Articles | Times Cited | Publisher | Available via IReL |
|------|---|-----------------|-------------|--|--------------------|
| 1 | PLOS ONE | 9,023 | 42,736 | PLOS | Yes |
| 2 | PHYSICAL REVIEW D | 4,276 | 57,485 | American Physical Society Journals (APS) | Yes |
| 3 | JOURNAL OF BIOLOGICAL CHEMISTRY | 4,103 | 80,904 | ASBMB | Yes |
| 4 | PHYSICAL REVIEW B | 3,247 | 42,757 | American Physical Society Journals (APS) | Yes |
| 5 | PROCEEDINGS OF THE NATIONAL ACADEMY OF SCIENCES OF THE UNITED STATES OF AMERICA | 2,890 | 102,414 | National Academy of Sciences USA | Yes |
| 6 | JOURNAL OF APPLIED PHYSICS | 2,415 | 16,210 | American Institute of Physics Journals | Yes |
| 7 | ASTROPHYSICAL JOURNAL | 2,357 | 41,291 | Astronomical Society Journals | Yes |
| 8 | APPLIED PHYSICS LETTERS | 2,310 | 22,674 | American Institute of Physics Journals | Yes |
| 9 | JOURNAL OF PHYSICAL CHEMISTRY C | 2,261 | 26,535 | American Chemical Society (ACS) | Yes |
| 10 | APPLIED AND ENVIRONMENTAL MICROBIOLOGY | 2,257 | 41,084 | American Society for Microbiology Journals | Yes |

National Research Prioritisation Exercise (NRPE) Classification Scheme

- Developed by the IUA iResearch project
- ‘Cross walk’ between the established Frascati & Web of Science classification schemes
- Journals & articles classified using the main National Research Prioritisation Exercise fields
- Illustrates the strategic alignment of the e-journals funded by IReL with the priority research areas of Ireland



National Research Prioritisation Exercise Main Fields: IUA & RCSI Authored Research 2005-2012

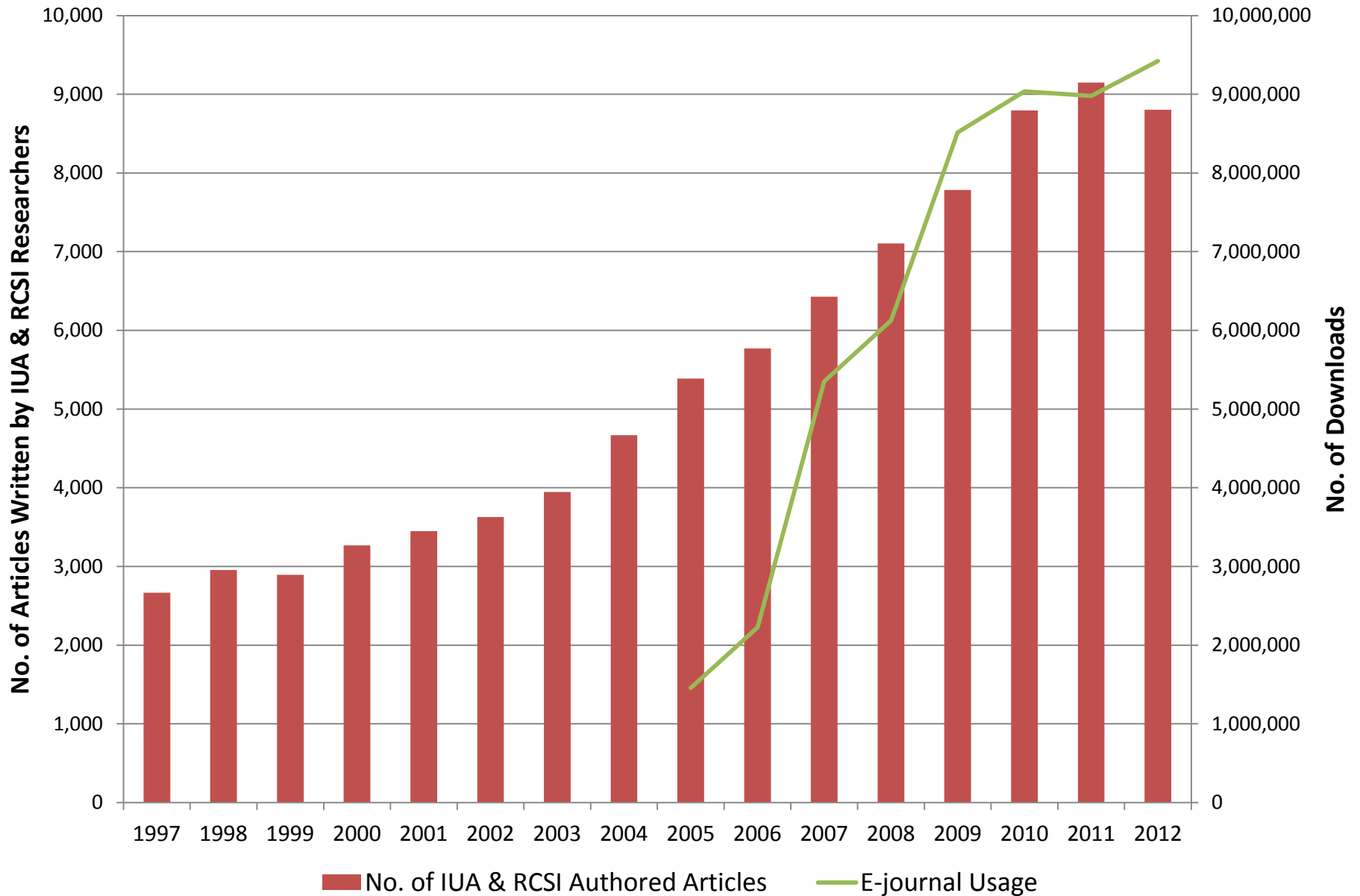
| NRPE Main Fields | Journal Normalised Citation Impact | # Articles | Times Cited | Average Cites per Article | # Journals |
|---|------------------------------------|------------|-------------|---------------------------|------------|
| 0. Multidisciplinary | 1.92 | 220 | 745 | 3.39 | 29 |
| 1. Medical, Health and Life Sciences & Technologies | 1.53 | 21,650 | 191,971 | 8.87 | 2,284 |
| 2. Environment (incl. Climate Change) | 1.37 | 2,365 | 20,167 | 8.53 | 490 |
| 3. Energy | 2.24 | 305 | 2,250 | 7.38 | 79 |
| 4. Biological Sciences, Agriculture, Food, Fisheries, Marine & Natural Resources | 1.70 | 8,604 | 106,893 | 12.42 | 1,151 |
| 5. Physical & Chemical Sciences & Engineering (incl. Materials, Advanced & Emerging Technologies) | 1.63 | 11,249 | 125,153 | 11.13 | 1,641 |
| 6. Information & Communication Technology | 2.30 | 6,043 | 21,419 | 3.54 | 2,203 |
| 7. Transport, Infrastructure, Manufacturing & Production | 1.74 | 1,116 | 5,786 | 5.18 | 380 |
| 8. Social Sciences, Economics, Law & Business | 1.41 | 4,637 | 16,953 | 3.66 | 1,305 |
| 9. Humanities | 0.99 | 2,892 | 1,197 | 0.41 | 654 |
| All NRPE Main Headings | 1.60 | 59,081 | 492,534 | 8.34 | 9,354 |

National Research Prioritisation Exercise Main Fields: IUA & RCSI Authored Research 2011-2012

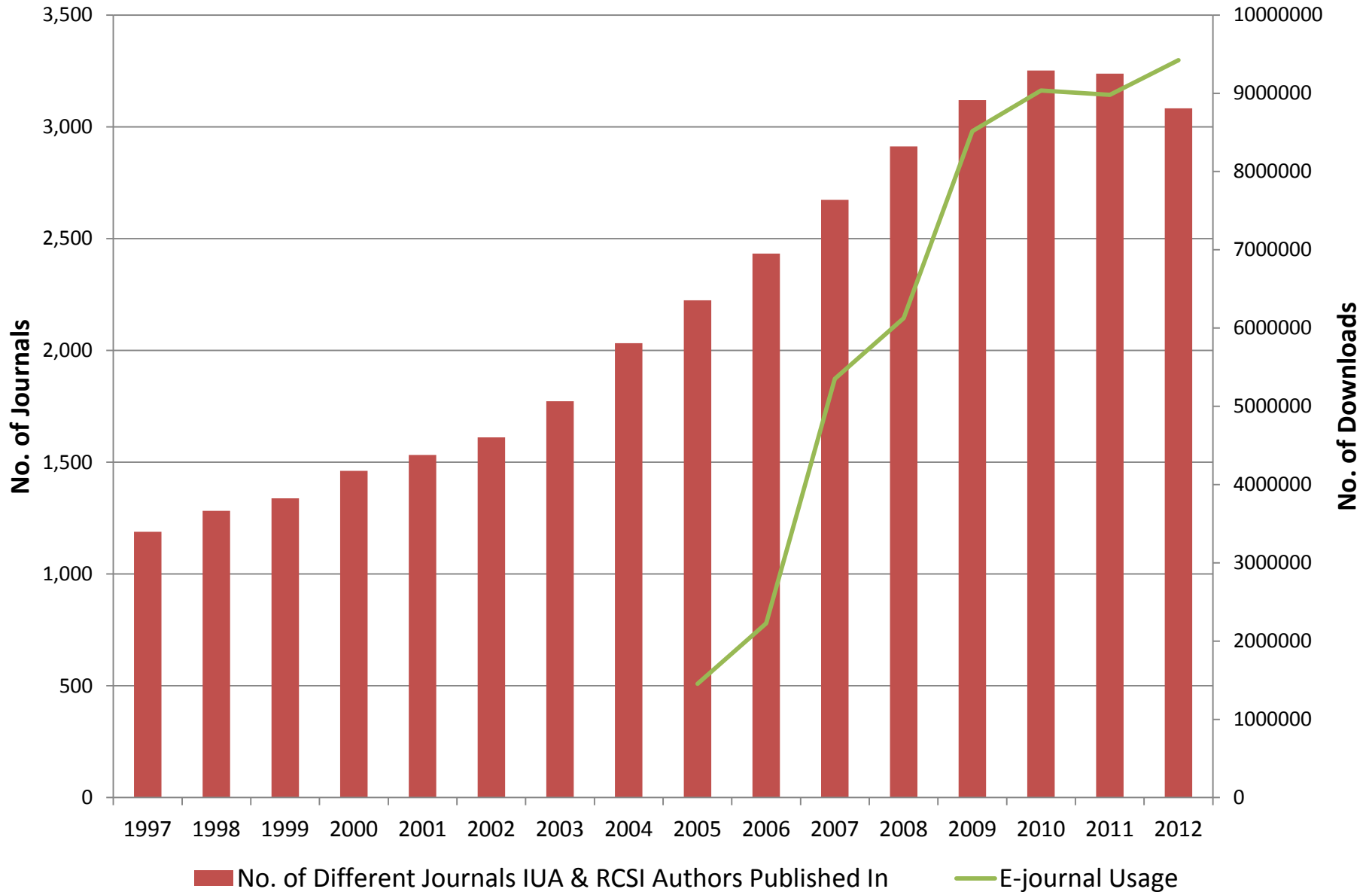
Mapping title level usage data for e-journals to key research performance indicators

| NRPE Main Fields | Journal Normalised Citation Impact | # Articles | Times Cited | Average Cites per Article | # Journals | Downloads |
|---|------------------------------------|------------|-------------|---------------------------|------------|------------|
| 0. Multidisciplinary | 2.46 | 160 | 438 | 2.74 | 20 | 2,026,759 |
| 1. Medical, Health and Life Sciences & Technologies | 2.13 | 7,335 | 16,642 | 2.27 | 1,508 | 3,976,006 |
| 2. Environment (incl. Climate Change) | 1.88 | 705 | 1,675 | 2.38 | 273 | 479,683 |
| 3. Energy | 2.99 | 92 | 244 | 2.65 | 38 | 101,700 |
| 4. Biological Sciences, Agriculture, Food, Fisheries, Marine & Natural Resources | 2.29 | 2,560 | 8,196 | 3.20 | 698 | 2,006,338 |
| 5. Physical & Chemical Sciences & Engineering (incl. Materials, Advanced & Emerging Technologies) | 2.41 | 3,386 | 12,969 | 3.83 | 821 | 1,425,362 |
| 6. Information & Communication Technology | 2.57 | 1,123 | 1,065 | 0.95 | 520 | 324,149 |
| 7. Transport, Infrastructure, Manufacturing & Production | 2.61 | 245 | 451 | 1.84 | 130 | 188,006 |
| 8. Social Sciences, Economics, Law & Business | 1.95 | 1,529 | 1,247 | 0.82 | 704 | 3,294,622 |
| 9. Humanities | 1.29 | 816 | 90 | 0.11 | 325 | 1,942,913 |
| All NRPE Main Headings | 2.22 | 17,951 | 43,017 | 2.40 | 4,632 | 15,765,538 |

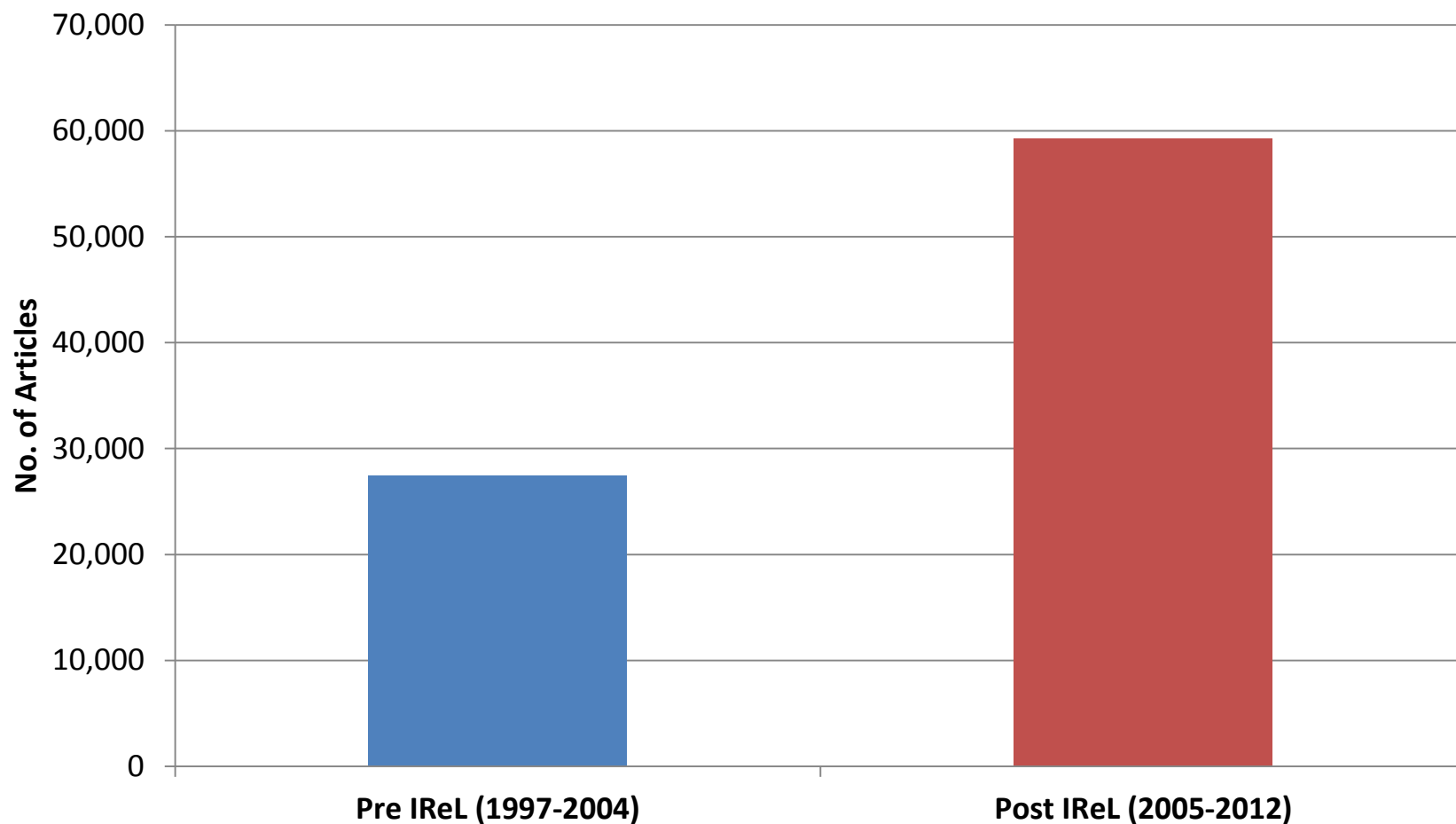
Number of Articles & E-journal Usage 1997-2012



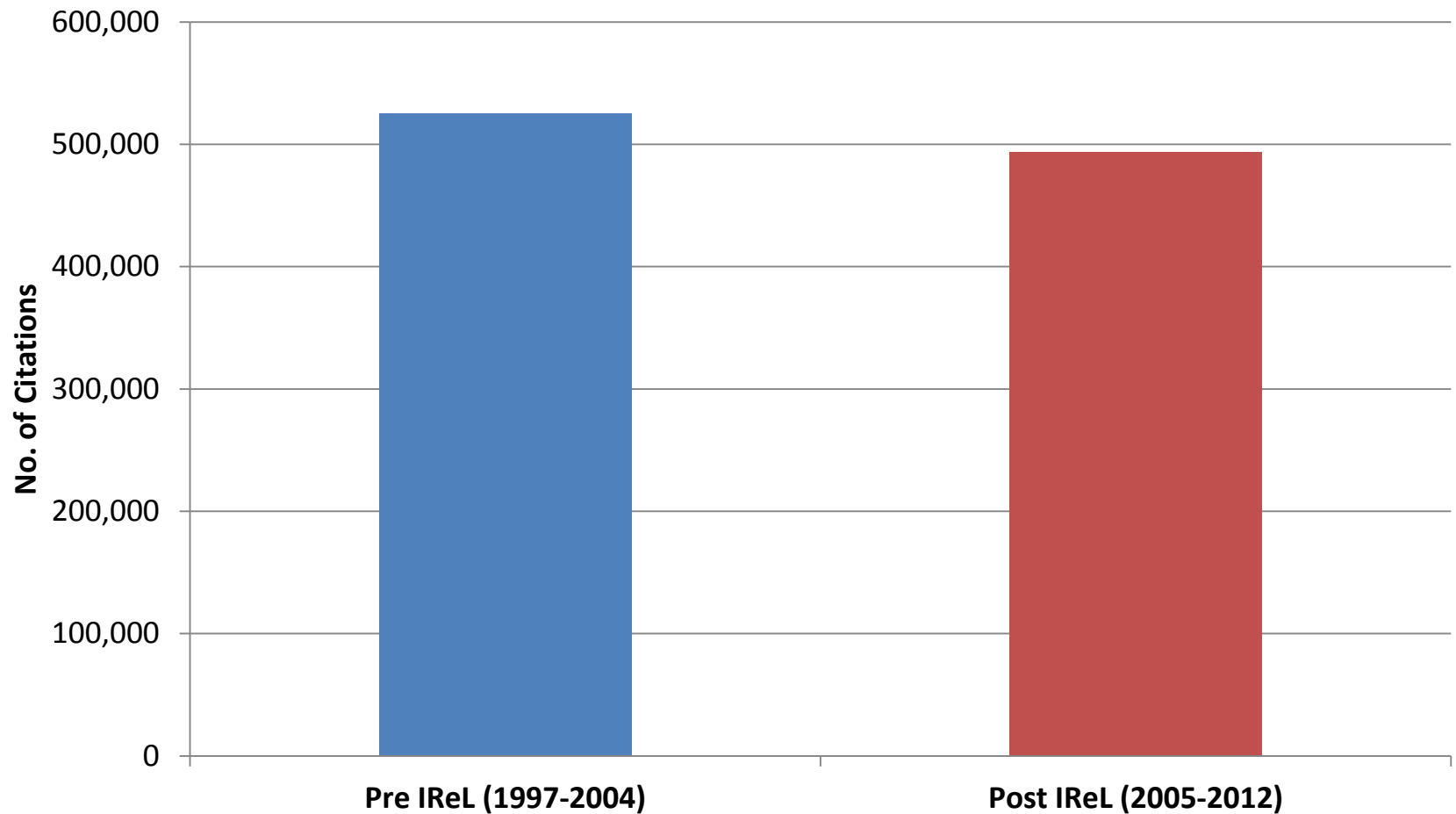
Number of Different Journals & E-journal Usage 1997-2012



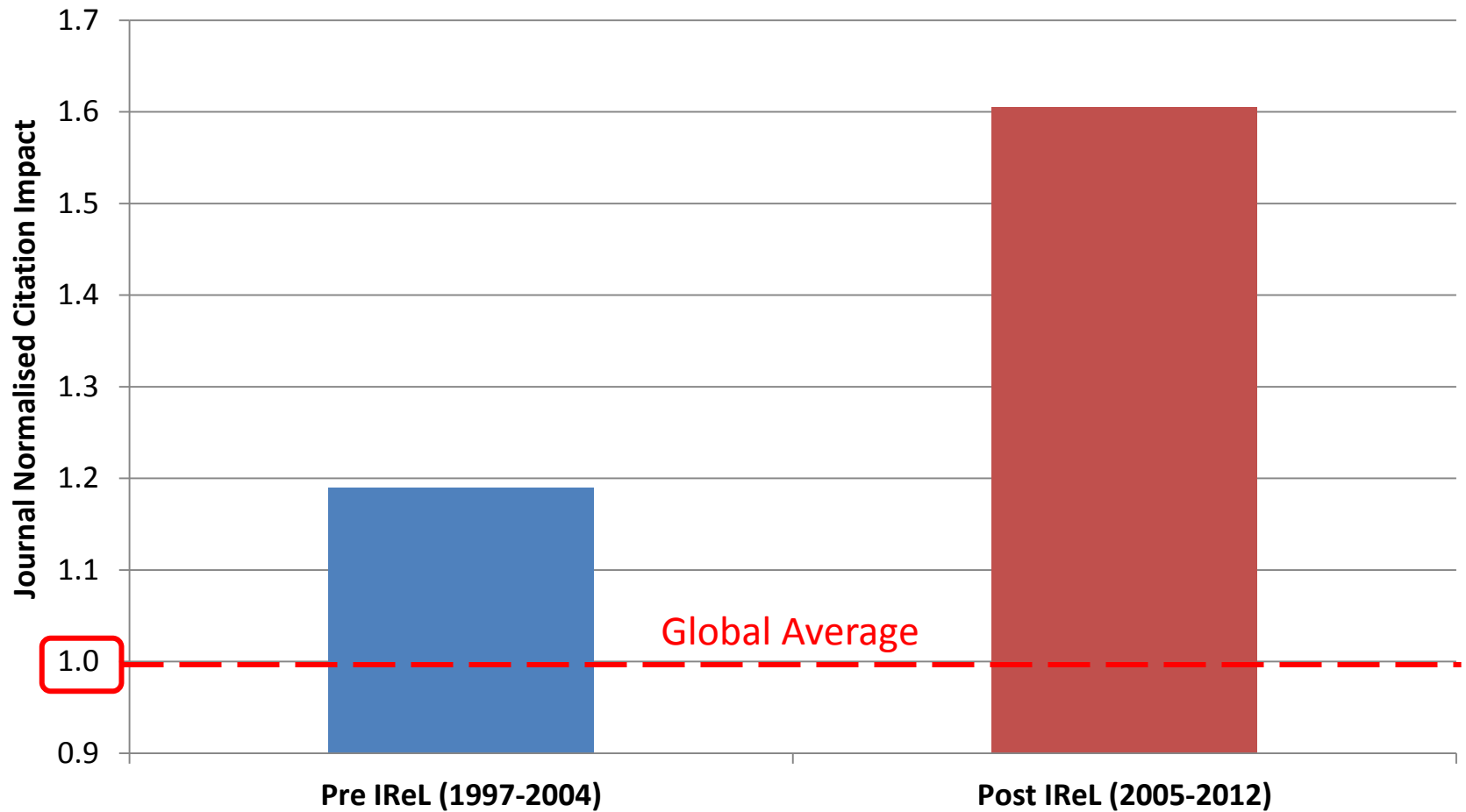
Number of Articles Pre IReL (1997-2004) & Post IReL (2005-2012)



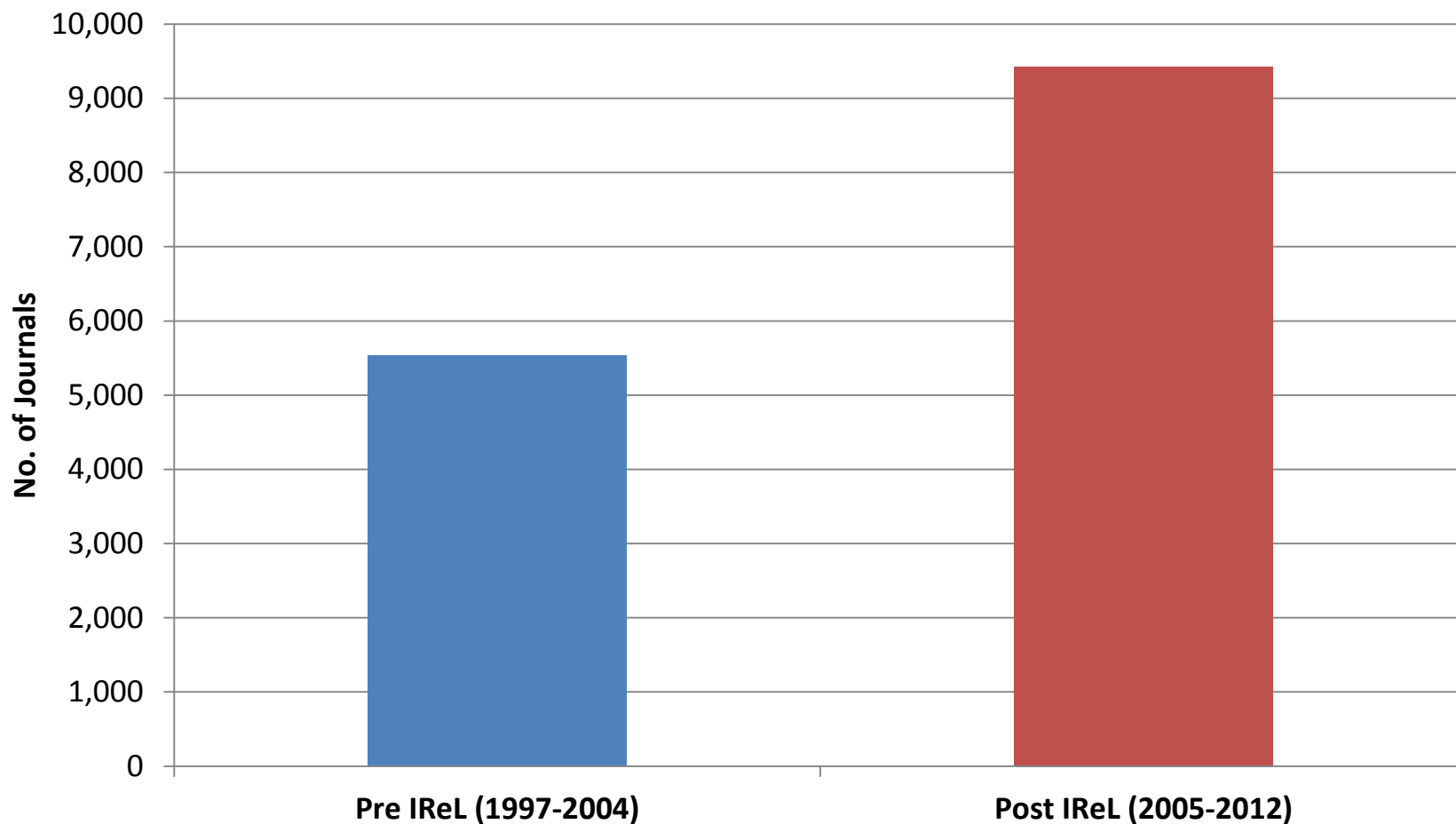
Number of Citations Pre IReL (1997-2004) & Post IReL (2005-2012)



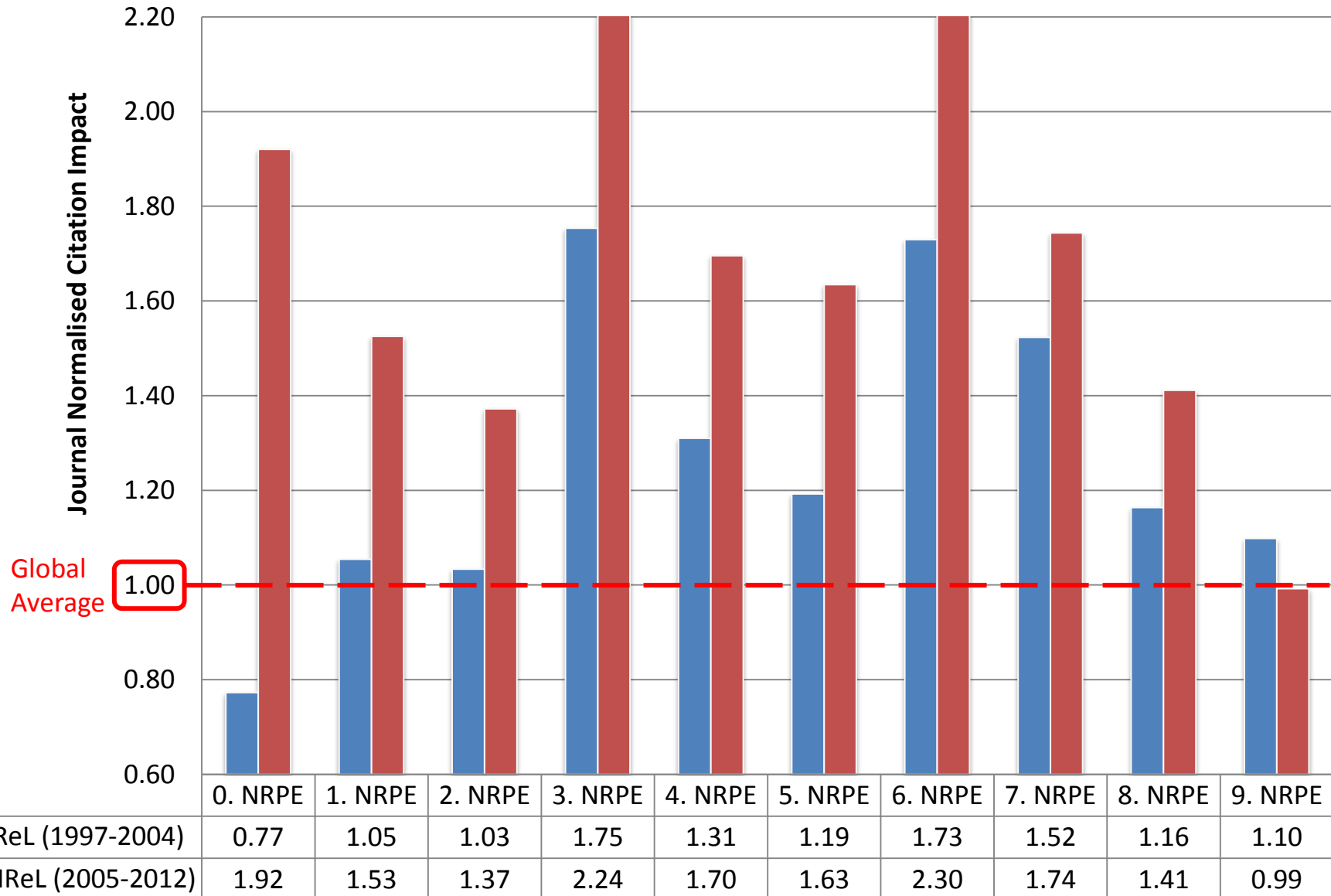
Journal Normalised Citation Impact Pre IReL (1997-2004) & Post IReL (2005-2012)



Number of Different Journals Published In Pre IReL (1997-2004) & Post IReL (2005-2012)



Journal Normalised Citation Impact by NRPE Main Headings Pre IReL (1997-2004) & Post IReL (2005-2012)



Conclusions

- Increase in the **usage** of e-journals provided by IReL every year
- IReL provides access to the journals **vital** to researchers' needs
- Increase in IUA & RCSI **research productivity & research impact** since the establishment of IReL → Several factors important including the **availability of online information resources**

Possible Applications for Individual Institutions

- To demonstrate to their **researchers, management & funders** the **value** of their **e-journal subscriptions** to the **quality** of the institution's **research outputs**
- To **identify important** (& unimportant) **journals** that their researchers publish in or that cite their research (*i.e.* e-journal collection development)

Acknowledgements

Thanks to **Fiona McGoldrick** (IRIS office) & the other IReL Monitoring Group Members as at October 2013: **Fran Callaghan** (DCU), **Julia Christopher** (RCSI), **Cora Gleeson** (UL), **Orla Kennedy** (IRIS office), **Ronán Kennedy** (NUIG), **John Paul Kiernan** (UCD), **Clíona Ní Shuilleabháin** (TCD), **Val Payne** (MU) & **Anita Wilcox** (UCC). Thanks also to **Rita Pinhasi** (IRIS office).

If you would like further information please email arhealy@tcd.ie or fintan.bracken@ul.ie

Questions?